

CABLE HANGING KIT

DESCRIPTION

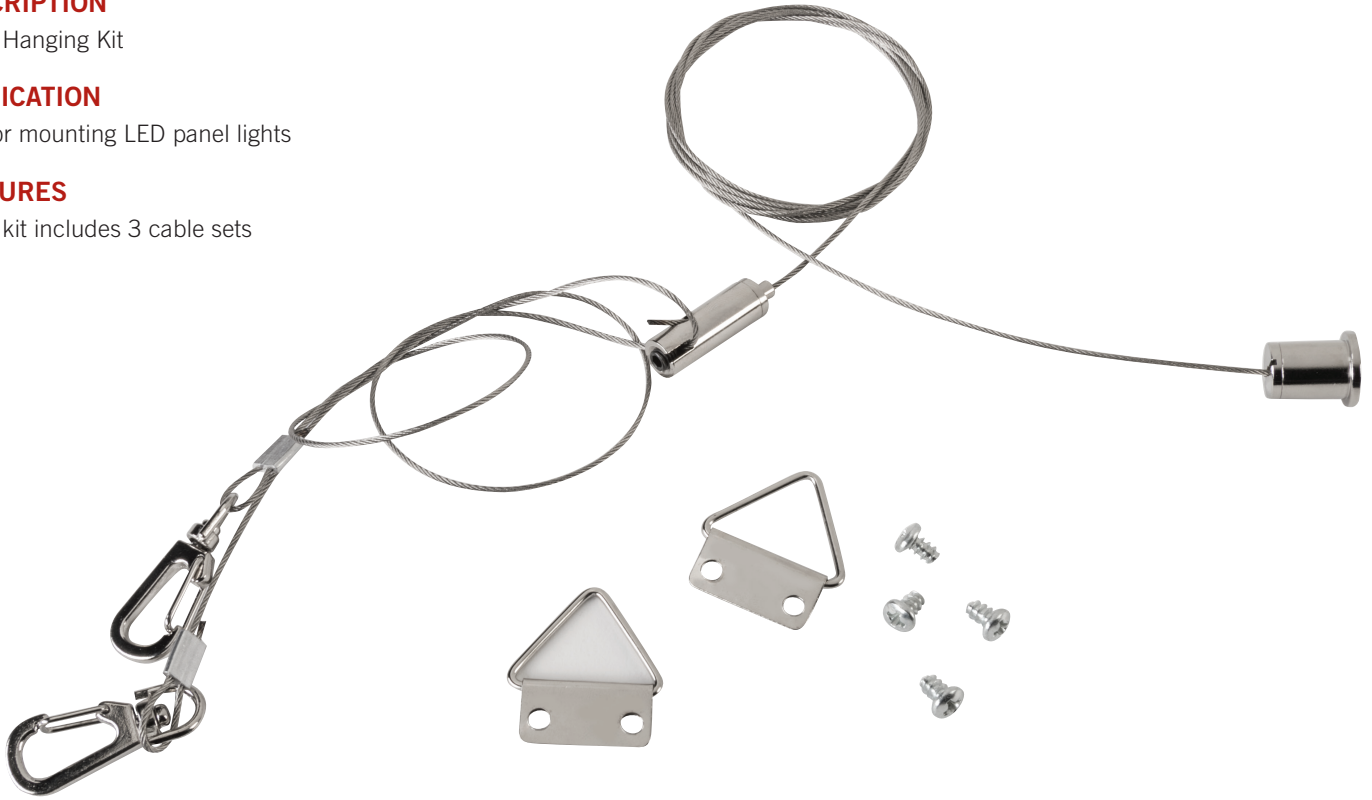
Cable Hanging Kit

APPLICATION

Use for mounting LED panel lights

FEATURES

Cable kit includes 3 cable sets



SUSPENSION KIT INSTALLATION

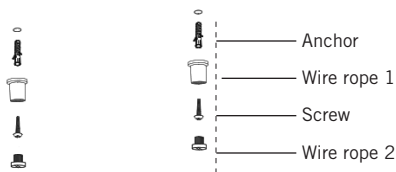
RECOMMENDATIONS

- Use 2 cables for 2' x 2' and 1' x 4' installations.
- Use 3 cables for 2' x 4' installations.

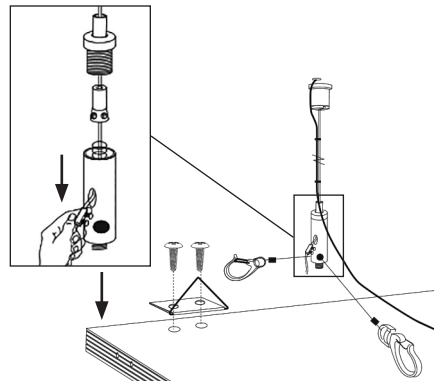
NOTE

- The installation must be carried out by a qualified electrician.

1. Drill 2 holes in the ceiling. Put the anchors into the holes, then insert the wire ropes and screws.



2. Install brackets to the edge of the panel. Attach cables and adjust the hanging rope so that the panel hangs level (48" maximum mounting suspension length).



3. The installation is finished.

