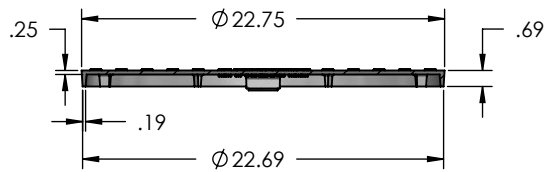
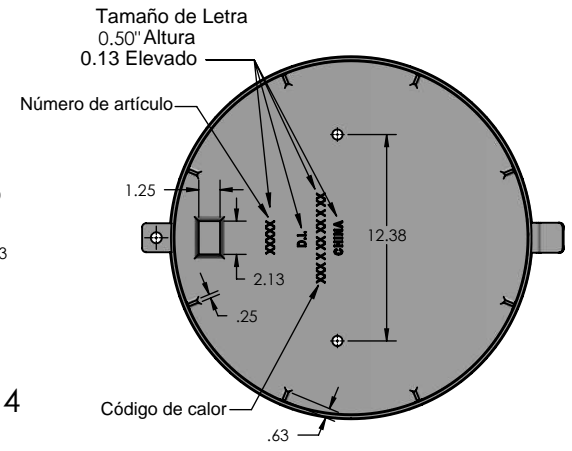
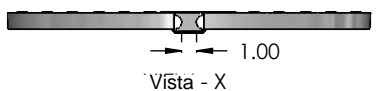


Sección B-B

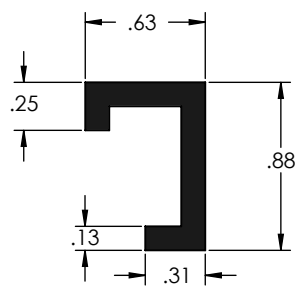
Detalle T  
Escala 1 : 4



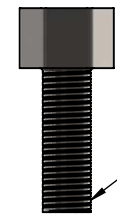
Sección A-A



Vista - X

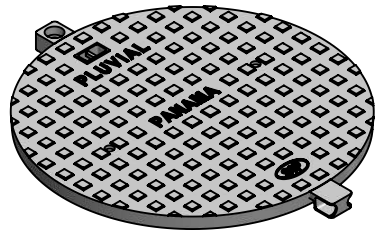


Junta de Goma  
(Material - Neopreno)



Tornillo de Cabeza Hexagonal  
0.50" DIA X 1.50" Largo  
Rosca BSW

Detalles Tornillo  
de Fijación  
(Material - Acero Inoxidable)



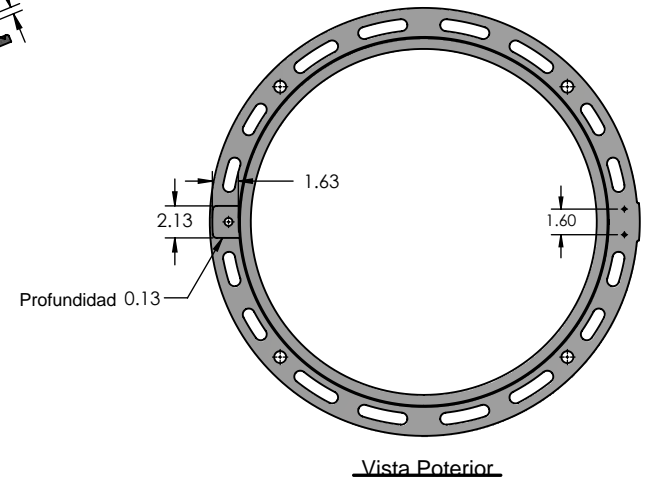
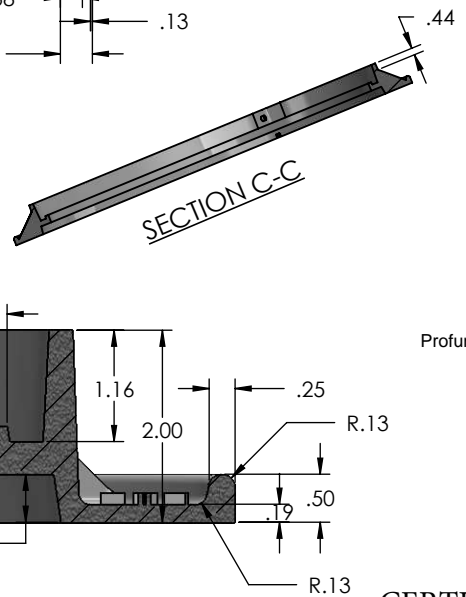
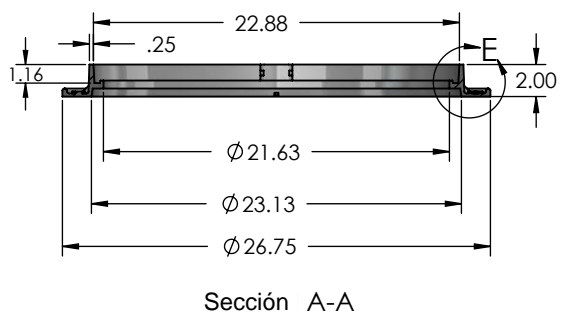
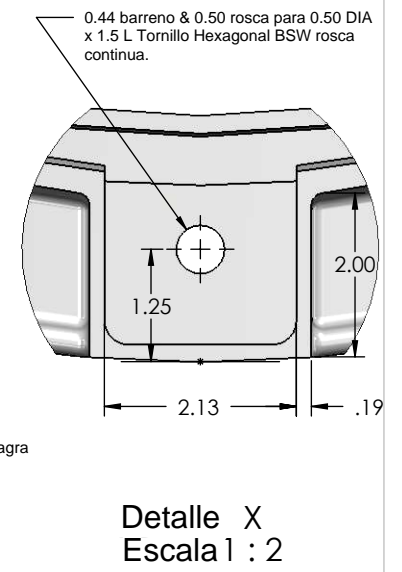
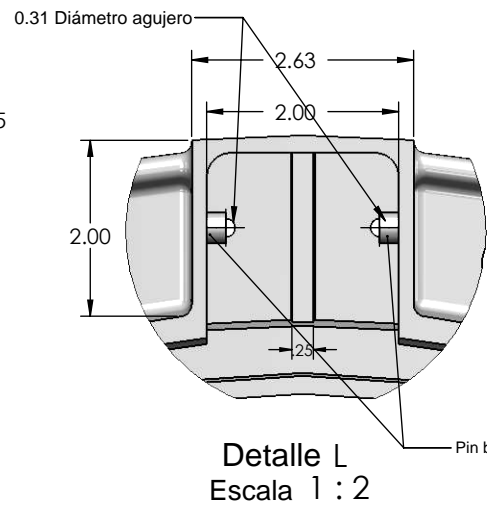
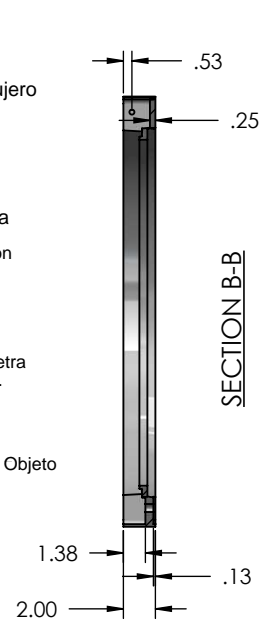
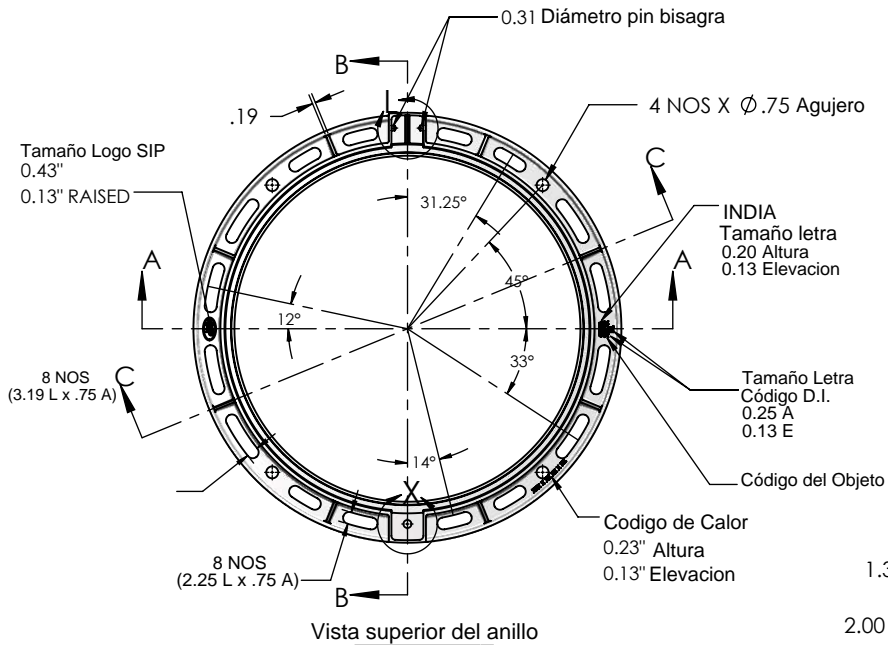
CERTIFICACION DE PRUEBA DE CARGA (20 ton)

**PROPRIETARY AND CONFIDENTIAL**  
THE INFORMATION CONTAINED IN THIS DRAWING IS THE SOLE PROPERTY OF SIP INDUSTRIES/SERAMPORE. ANY REPRODUCTION IN PART OR AS A WHOLE WITHOUT THE WRITTEN PERMISSION OF SIP INDUSTRIES/SERAMPORE IS PROHIBITED.

Approx. Wt.:	<b>31 LBS</b>	
Approx. Surf. Area.:	<b>IN<sup>2</sup></b>	
MATERIAL	<b>Ductile Iron Per ASTM A536</b>	
Terminar		
REV	Descripcion	Fecha
	Revisión	No Escala Dibujo

A Menos Especificado: Dimensiones son en pulgadas.		
TOLERANCES: FRACTIONAL: ±0.06 DECIMAL: ± 0.031 ANGLES: ±1° DRAFT ANGLES: 2°±1°		
DRAWN	NAME	DATE
	Miral	06/16/17
Comentarios:		
Acueducto o Pluvial		

Tapa Sola de 24" Panama		
<b>SIP Industries/Serampore</b>		
2900 Patio Drive Houston, TX 77017 United States of America		
Ph: (713) 923-6111 Fax: (713) 923-6114		
SIZE	DWG. NO.	REV
<b>A</b>	18PNM24CPL	
SCALE: 1:12		Página 1 de 3



Detalle E  
Escala 1 : 2

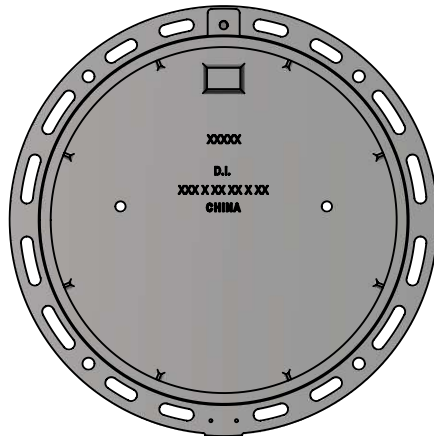
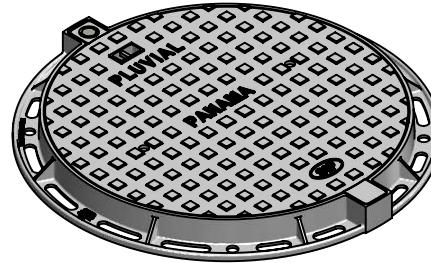
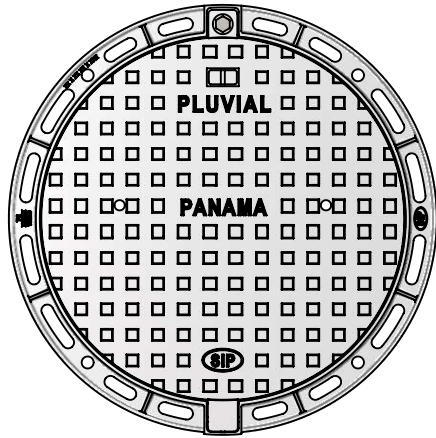
CERTIFICACION DE PRUEBA DE CARGA (20 ton)

**PROPRIETARY AND CONFIDENTIAL**  
THE INFORMATION CONTAINED IN THIS DRAWING IS THE SOLE PROPERTY OF SIP INDUSTRIES/SERAMPORE. ANY REPRODUCTION IN PART OR AS A WHOLE WITHOUT THE WRITTEN PERMISSION OF SIP INDUSTRIES/SERAMPORE IS PROHIBITED.

Approx. Wt.:	<b>26 LBS</b>	
Approx. Surf. Area.:	<b>IN<sup>2</sup></b>	
MATERIAL	<b>Ductile Iron Per ASTM A536</b>	
FINISH		
REV	DESCRIPTION	DATE
REVISION		DO NOT SCALE DRAWING

UNLESS OTHERWISE SPECIFIED: DIMENSIONS ARE IN INCHES		
TOLERANCES: FRACTIONAL: ±0.06 DECIMAL: ± 0.031 ANGLES: ±1° DRAFT ANGLES: 2°±1°		
DRAWN	NAME	DATE
	Mrrinal	06/16/17
COMMENTS:		

Anillo Panama Solo de 24"		
<b>SIP Industries/Serampore</b> 2900 Patio Drive Houston, TX 77017 United States of America Ph: (713) 923-6111 Fax: (713) 923-6114		
SIZE	DWG. NO.	REV
<b>A</b>	18PANAMA24R	
SCALE: 1:12		Pagina 2 de 3



### CERTIFICACION DE PRUEBA DE CARGA (20 ton)

**PROPRIETARY AND CONFIDENTIAL**

THE INFORMATION CONTAINED IN THIS DRAWING IS THE SOLE PROPERTY OF SIP INDUSTRIES/SERAMPORE. ANY REPRODUCTION IN PART OR AS A WHOLE WITHOUT THE WRITTEN PERMISSION OF SIP INDUSTRIES/SERAMPORE IS PROHIBITED.

Approx. Wt.:	<b>57 LBS (SET)</b>	
Approx. Surf. Area.:	<b>IN<sup>2</sup></b>	
MATERIAL	<b>Ductile Iron Per ASTM A536</b>	
FINISH		
REV	DESCRIPTION	DATE
	REVISION	DO NOT SCALE DRAWING

UNLESS OTHERWISE SPECIFIED: DIMENSIONS ARE IN INCHES			Tapa de 24" con Anillo Panama		
TOLERANCES: FRACTIONAL: ±0.06 DECIMAL: ± 0.031 ANGLES: ±1° DRAFT ANGLES: 2°±1°			<b>SIP Industries/Serampore</b> 2900 Patio Drive Houston, TX 77017 United States of America Ph: (713) 923-6111 Fax: (713) 923-6114		
DRAWN	NAME	DATE			
	Mrrinal	06/16/17	COMMENTS:		
SIZE	DWG. NO.	REV			
<b>A</b>	17PANAMA24				
SCALE: 1:12			Pagina 3 de 3		