

DI GROOVED FITTINGS-CAP WITH CONCENTRIC HOLE

Type: 300

Doc No: DS-400-300TX-01-E

1.0 PRODUCT OVERVIEW

Caps with concentric hole are used at the end of the groove pipeline connection, which would close the pipeline accordingly. The female threads of NPT or BSP are in the middle of the caps, and the center of the female threads is the same with the center of the pipeline.



Dimensions:

2"(DN50)– 8"(DN200)

Design Standard:

ISO6182, AWWA C606, GB 5135.11

Connection Standard:

ASME B36.10, ASTM A53-A53M, ISO 4200

Working Pressure:

175PSI-500PSI

Application:

The cap with concentric hole product is suitable for medium and low pressure pipeline systems with nominal pressure 175-500 PSI, nominal size DN50-DN200, temperature range of - 20 °C--+180°C, which are widely applied in water supply and drainage, fire-fighting, air conditioning, etc.

Pipe Material:

Welded and seamless rolled steel pipes according to ASME B36.10, ASTM A53-A53M, ISO 4200, GB/T 21835

Surface Treatment:

Sign Off:

Owner:_____ Contractor:_____

Engineer: _____

Location:_____ Date:_____

Approved& Date: _____

- Electrophoretic painting
- Epoxy power painting
- Hot-dip galvanizing
- Black
- Others would be available upon clients' detailed request

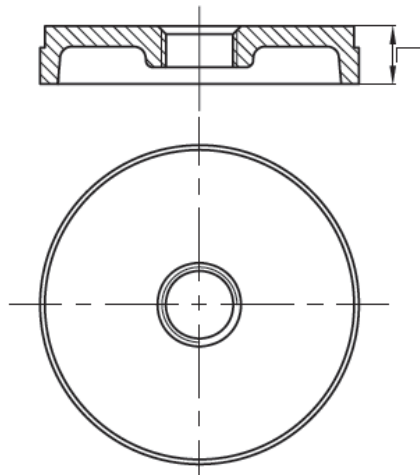
2.0 APPROVALS



3.0 SPECIFICATIONS-MATERIAL

Ductile iron according to ASTM A536, grade 65-45-12. The nodularity is more than 90%, ensuring excellent physical and mechanical properties.

4.0 DIMENSIONS AND PERFORMANCE



Sign Off:

Owner: _____ Contractor: _____
Location: _____ Date: _____

Engineer: _____
Approved & Date: _____

Nominal Size	Pipe O.D	Working Pressure	Dimensions L
DN/in	mm/in	PSI/MPa	mm/in
50X25 2X1	60.3X33.7 2.375X1.315	500 3.45	23.5 0.93
50X40 2X1½	60.3X48.3 2.375X1.900	500 3.45	23.5 0.93
65X50 2½X2	73.0X60.3 2.875X2.375	500 3.45	23.5 0.93
65X25 2½x1	76.1X33.7 3.000X1.315	500 3.45	24.5 0.96
65x40 2½ × 1½	76.1x48.3 3.000x1.900	500 3.45	23.5 0.925
65X50 2½ × 2	76.1X60.3 3.000X2.375	500 3.45	24 0.94
80X15 3X½	88.9X21.3 3.500X0.825	500 3.45	25.4 1
80X25 3X1	88.9X33.7 3.500X1.315	500 3.45	24 0.94
80X40 3X1½	88.9X48.3 3.500X1.900	500 3.45	23.5 0.925
80x50 3x2	88.9x60.3 3.500x2.375	500 3.45	23.5 0.925
100x15 4x½	114.3x21.3 4.500x0.825	500 3.45	27 1.06
100x25 4x1	114.3x33.7 4.500x1.315	500 3.45	27 1.06
100X40 4X1½	114.3X48.3 4.500X1.900	500 3.45	25.4 1
100x50 4x2	114.3x60.3 4.500x2.375	500 3.45	25.4 1
125x50 5x2	139.7x60.3 5.500x2.375	500 3.45	27 1.06
150X25 6X1	159.0X33.7 6.250X1.315	500 3.45	27 1.06
150x15 6x½	165.1x21.3 6.500x0.825	500 3.45	27 1.06
150x25 6x1	165.1x33.7 6.500x1.315	500 3.45	27 1.06
150x40 6x1½	165.1x48.3 6.500x1.900	500 3.45	25.4 1

Sign Off:

Owner: _____ Contractor: _____ Engineer: _____
 Location: _____ Date: _____ Approved & Date: _____

Nominal Size	Pipe O.D	Working Pressure	Dimensions L
DN/in	mm/in	PSI/MPa	mm/in
150x50 6x2	165.1x60.3 6.500x2.375	500 3.45	27 1.06
150X40 6X1½	168.3x48.3 6.625X1.900	500 3.45	27 1.06
150x50 6x2	168.3x60.3 6.625×2.375	500 3.45	27 1.06
200X25 8X1	219.1X33.7 8.625X1.315	500 3.45	30 1.18

5.0 REFERENCE MATERIALS

Approved certification for Grooved Fittings and Couplings

I-JM-Grooved fitting: Installation Instructions for grooved fittings and couplings

Sign Off:

Owner: _____ Contractor: _____

Engineer: _____

Location: _____ Date: _____

Approved & Date: _____