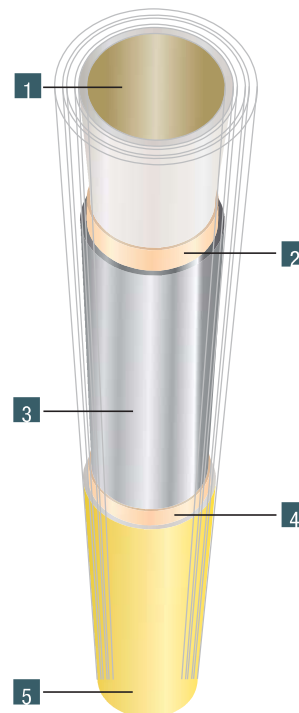
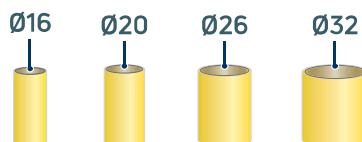


Gaspex pipe

Multilayer Gaspex pipe



Construction

- 1 Cross-linked polyethylene inner pipe (PE-Xb).
- 2 Bonding layer connecting the inner pipe to the aluminium pipe.
- 3 Butt-welded aluminium pipe, thickness min 0,2 mm.
- 4 Bonding layer connecting the outer pipe to the aluminium pipe.
- 5 High-density polyethylene inner pipe (PE-Xb), yellow colour.

Corrugated sheath technical data (ref. precoated pipe)

Material: Polypropylene PP

Technical data Gaspex pipe

Operating temperature: -20 °C+70 °C (*)
 Max operating pressure: 0,5 bar (*)
 Coefficient of linear expansion: 0.026 mm/m °C
 Thermal conductivity: 0.45W/m°C
 Minimum radius of bending: 5 x Ø pipe
 Surface roughness of internal pipe: 7 µm

(*) values referring to certification according to UNI 11344, for applications according to UNI 7129-1 and UNI 11528

Expandable corrugated sheath technical data

Material: Polypropylene PP
 Self-extinguishing (CEI EN 60695-2-10):
 1) Class 850 (°C)
 2) Mean extinguishing time 6,4 (seconds)
 Self-extinguishing (UL 94): Class V2
 Expanding capacity: approximately 3 times the original length

> **kiwa**  : sizes Ø 16, Ø 20, Ø 26, Ø 32

> **kQ**  : sizes Ø 16, Ø 20, Ø 26, Ø 32

Multilayer Gaspex pipe



Gaspex bare pipe in roll

Dimension	Mts. pack	Code	Price €
16 x 2	100 m	28109200	1,81
20 x 2	100 m	28109204	2,43
26 x 3	50 m	28109206	5,43
32 x 3	50 m	28109208	6,74



Gaspex bare pipe in 4 mt bars

Dimension	Mts. pack	Code	Price €
26 x 3	40	28109226	5,96
32 x 3	28	28109228	10,40

Packaged in rigid protective pipe



Gaspex pipe with rolled corrugated sheath

Dimension	Ø internal sheath	Ø external sheath	Mts. pack	Code	Price €
16 x 2	31 mm	36 mm	50	28109260	3,76
20 x 2	31 mm	36 mm	50	28109264	4,47
26 x 3	40 mm	46 mm	25	28109266	7,94

Size of corrugated sheath appropriate to the requirements of UNI 7129-1: 2015



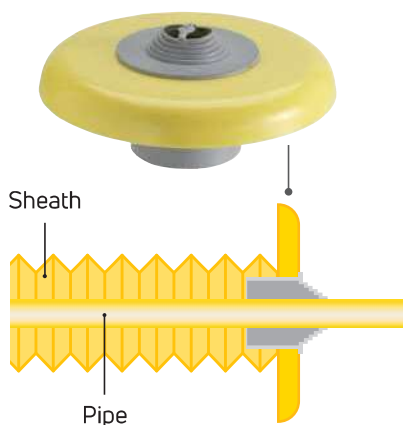
Expandable corrugated sheath

Dimension	Mts. pack	Code	Price €
20*	50	01220500	1,91
25*	25	01220502	2,39
30*	25	01220504	2,87
40*	25	01220506	3,32

(*) internal Ø (mm)

For installations in compliance with UNI 7129:2015, use:

- sheath Ø 30 for 16x2 and 20x2 pipe;
- sheath Ø 40 for 26x3 pipe.



Expandable sheath terminal

Dimension	Pcs. pack	Code	Price €
20 (*)	10	01220508	4,08
25 (*)	10	01220510	4,08
30 (*)	10	01220512	4,08
40 (*) (**)	10	01220514	3,83

(*) internal Ø (mm)

(**) Item to be out of stock